

An hini a garan

Traditionnel
arrangements : LENCLUD Rodrigue

$\text{♩} = 80$
Couple Brazh

Musical score for the first system of 'An hini a garan'. The score is written for five instruments: Bombardes, Cornemuses, Bombarde Ténor, Bombarde Sol, and Toms / Grosse caisse / Caisse claire. The key signature is two flats (B-flat and E-flat), and the time signature is 3/8. The tempo is marked as $\text{♩} = 80$ and the style is 'Couple Brazh'. The Bombardes and Cornemuses parts feature a melodic line with eighth and sixteenth notes, while the Bombarde Ténor, Bombarde Sol, and Toms / Grosse caisse / Caisse claire parts are marked with rests.

Musical score for the second system of 'An hini a garan', starting at measure 6. The score is written for five instruments: Bomb. (Bombardes), Cnm. (Cornemuses), Bomb. T. (Bombarde Ténor), Bomb. S. (Bombarde Sol), and T. /G. C. (Toms / Grosse caisse) / C. C. (Caisse claire). The key signature is two flats (B-flat and E-flat), and the time signature is 3/8. The Bomb. and Cnm. parts feature a melodic line with eighth and sixteenth notes, while the Bomb. T., Bomb. S., and T. /G. C. / C. C. parts are marked with rests.

12

Bagad complet

Bomb.

Cnm.

Bomb. T.

Bomb. S.

T. /G. C.

C. C.

18

Bomb.

Cnm.

Bomb. T.

Bomb. S.

T. /G. C.

C. C.

22

Bomb.

Cnm.

Bomb. T.

Bomb. S.

T. /G. C.

C. C.

26

To Coda

Bomb.

Cnm.

Bomb. T.

Bomb. S.

T. /G. C.

C. C.



30

Bomb.

Cnm.

Bomb. T.

Bomb. S.

T. /G. C.

C. C.

34

Bagad complet

Bomb.

Cnm.

Bomb. T.

Bomb. S.

T. /G. C.

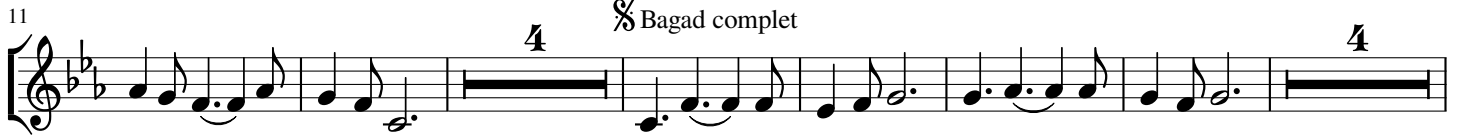
C. C.

Bombardes

An hini a garan

Traditionnel
arrangements : LENCLUD Rodrigue

♩ = 80
Couple Brazh

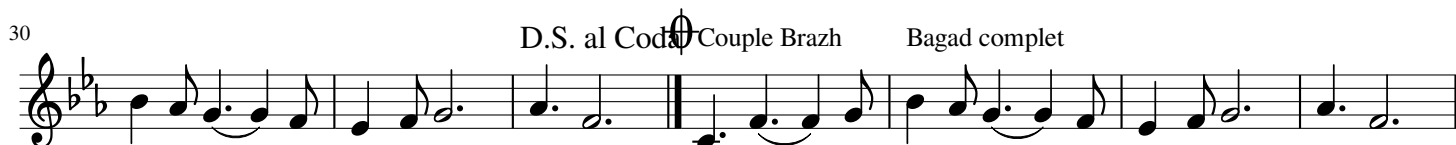


Cornemuses

An hini a garan

Traditionnel
arrangements : LENCLUD Rodrigue

$\text{♩} = 80$
Couple Brazh



Bombarde Ténor

An hini a garan

Traditionnel
arrangements : LENCLUD Rodrigue

♩ = 80
Couple Brazh 16 Bagad complet 4

26 To Coda D.S. al Coda Couple Brazh Bagad complet 4

Detailed description: The image shows two systems of musical notation for the Breton tenor bombardine piece 'An hini a garan'. The first system starts with a treble clef, a key signature of two flats (B-flat and E-flat), and a 9/8 time signature. It includes a tempo marking of quarter note = 80. The notation features a 16-measure rest labeled 'Couple Brazh', followed by a 'Bagad complet' section with a 4-measure rest. The second system begins at measure 26, marked 'To Coda'. It contains a 'D.S. al Coda' section with a 4-measure rest, followed by a 'Couple Brazh' section and another 'Bagad complet' section with a 4-measure rest. The piece concludes with a Coda symbol.

Toms / Grosse caisse

An hini a garan

Traditionnel
arrangements : LENCLUD Rodrigue

♩ = 80

Couple Brazh 16

Bagad complet

23 To Coda

30 D.S. al Coda Couple Brazh Bagad complet

Caisse claire

An hini a garan

Traditionnel
arrangements : LENCLUD Rodrigue

♩ = 80

15

Couple Brazh

Bagad complet

22

28

To Coda

D.S. al Coda

Couple Brazh

34

Bagad complet

Bombarde Sol

An hini a garan

Traditionnel
arrangements : LENCLUD Rodrigue

♩ = 80

Couple Brazh 16

Bagad complet 4

To Coda 4

30

D.S. al Coda

Couple Brazh Bagad complet